

承認書

Specification For Approval

COMPANY NAME	
CUSTOMER P/N	
PRODUCT NAME	AC/DC ADAPTER
PARTS P/N	CP1250
DATE	2009-12-25

APPROVED BY	CHECKED BY	PREPARED BY	CUSTOMER APPROVAL SIGNATURE

寶三電子有限公司 POWSUN CO.,LTD.

一厂:

工厂地址: 广东省东莞市清溪镇渔梁围朱屋村

TEL: (0769) 86814578

FAX: (0769) 86814576

二厂:

工厂地址: 广东东莞清溪镇长山头村康怡路 180 号

TEL: (0769) 86814698

FAX: (0769) 86814697

<http://www.powsun.com>

E-mail:powsun@powsun.com

TABLE OF CONTENTS

1. FEATURE -----	2
2. INPUT -----	2
INPUT VOLTAGE-----	2
INPUT FREQUENCY-----	2
INPUT CURRENT-----	2
INRUSH CURRENT-----	2
EFFICIENCY-----	2
INPUT POWER DISSIPATION-----	2
3. OUTPUT -----	2
OUTPUT VOLTAGE-----	2
OUTPUT CURRENT-----	2
REGULATION-----	2
RIPPLE & NOISE-----	2
TOTAL POWER-----	2
4. PROTECTION -----	2
OVER VOLTAGE PROTECTION-----	2
SHORT CIRCUIT PROTECTION-----	2
OVER POWER PROTECTION-----	2
5. SAFETY AND EMI REQUIREMENT -----	3
SAFETY REQUIREMENT-----	3
EMI REQUIREMENT-----	3
LEAKAGE CURRENT-----	3
6. OPERATION & ENVIRONMENT PERFORMANCE -----	3
TEMPERATURE RANGE-----	3
HUMIDITY RANGE(NON CONDENSING)-----	3
7. M.T.B.F -----	3
8. SAMPLE TEST REPORT -----	4、5
9. OUTLINE DRAWING -----	6

POWSUN CO.,LTD SPECIFICATION FOR APPROVAL

1. FEATURE:

- INPUT :UNIVERSAL 100-240 Vac/47-63 Hz INPUT, WITHOUT ANY SLIDE SWITCH
- OUTPUT :+12V / 0-5A
- DIMENSION :117(D)*64(W)*35(H)
- EFFICIENCY :82% TYPICAL
- SAFETY : UL/BSMI/CB/CE/TUV/C-Tick/DOFT/PSE/CCC/KE
- EMI :CISPR 22/FCC/VCCI CLASS B; CONDUCTED & RADIATED MEETED
- HIGH FREQUENCY DESIGN, LESS POWER CONSUMPTION
- OVER VOLTAGE PROTECTION, SHORT CIRCUITED PROTECTION, OVER POWER PROTECTION
- CAN BE USED AT TEL COMMUNICATION, COMPUTER, INDUSTRIAL CONTORLLER & OA SYSTEM

2. INPUT:

2.1 VOLTAGE	UNIVERSAL 100~240Vac,SINGLE PHASE
2.2 FREQUENCY	47HZ~63HZ
2.3 CURRENT	1.8A Max
2.4 INRUSH CURRENT	42A Max/100Vac;84A Max/240Vac (COLD STABT AT 25°C FULL LOAD)
2.5 EFFICIENCY	82% TYPICAL (AT NOMINAL LINE VOLTAGE FULL LOAD)
2.6 INPUT POWER DISSIPATION	UNDER 0.5W < ZERO LOAD 115V/60HZ INPUT
	UNDER 0.5W < ZERO LOAD 230V/50HZ INPUT

3. OUTPUT:

3.1 DC OUTPUT	VOLTAGE	+12.00V
	CURRENT	5.0A Max
	REGULATION	11.40V Min~12.00V Typ.~12.60V Max
	RIPPLE & NOISE	120mV Max
	TOTAL POWER	60W Max

NOTE: FOR RIPPLE & NOISE MEASUREMENT, USE A 20MHZ BAND WIDTH FREQUENCY OSCILLOSCOPE, AND ADD A 0.1uF MULTILAYER CAP. AND A LOW ESR ELECTROLYTICCAP. (10uF) AT OUTPUT CONNECTOR TERMINALS. (AT NOMINAL LINE VOLTAGE FULL LOAD)

4. PROTECTION:

4.1 OVER VOLTAGE PROTECTION	$V_{out} * (110\% - 140\%)$
4.2 SHORT CIRCUIT PROTECTION	AUTOMATIC RECOVERY AFTER SHORT-CIRCUIT FAULT REMOVED
4.3 OVER POWER PROTECTION	THE ADAPTER PROVIDE PROTECTION AT 110-140% OF RATED OUTPUT POWER

NOTE: WHEN PROTECTION CIRCUIT IS WORKING THE POWER SUPPLY WILL SHUTDOWN, ONCE THE ABNORMAL CONDITIONS ARE REMOVED. THE POWER SUPPLY WILL RESTART AUTOMATICALLY.

POWSUN CO.,LTD SPECIFICATION FOR APPROVAL

5. SAFETY AND EMI REQUIREMENT:

5.1 SAFETY REQUIREMENT

- a. SAFETY : UL/BSMI/CB/CE/TUV/C-Tick/DOFT/PSE/CCC/KE
- b. DIELECTRIC STRENGTH :10mA Max. CUT OFF CURRENT

(1):PRIMARY TO SECONDARY	: 1500Vac FOR 1 MINUTE
(2):PRIMARY TO FRAME GROUND	: 1500Vac FOR 1 MINUTE

c. INSULATION RESISTANCE:

(1):PRIMARY TO SECONDARY	: 10 M OHMS FOR 500Vdc
(2):PRIMARY TO FRAME GROUND	: 10 M OHMS FOR 500Vdc

5.2 EMI REQUIREMENT MEET CISPR 22/FCC/VCC1, CLASS B

5.3 LEAKAGE CURRENT LESS THAN 3.5mA

6.OPERATION & ENVIRONMENT PERFORMANCE:

6.1 TEMPERATURE RANGE

OPERATING	0°C ~ +40°C
STORAGE	-40°C ~+70°C

6.2 HUMIDITY RANGE (NON CONDENSING)

OPERATING	10% ~ 90% RH
STORAGE	5% ~ 95% RH

6.3 COOLING

SHOULD OPERATE WITHOUT FAN

7.M.T.B.F.:

50000 HOURS Min ; 40°C SEE CONDITION

TEST REPORT

(I). LINE REGULATION TEST

Test result:

Test condition	Spec.	Reading
90Vac / 50% load	11.40~12.60V	12.07V
115Vac / 50% load	11.40~12.60V	12.07V
132Vac / 50% load	11.40~12.60V	12.07V
180Vac / 50% load	11.40~12.60V	12.07V
230Vac / 50% load	11.40~12.60V	12.07V
264Vac / 50% load	11.40~12.60V	12.07V

(II). EFFICENCY TEST

Test result:

Test condition	Spec.	Reading
115Vac / 100% load	84% Typical	84.3%
230Vac / 100% load	84% Typical	84.1%

(III). LOAD REGULATION TEST

Test result:

Test condition	Spec.	Reading
115Vac / 0% load	11.40~12.60V	12.43V
115Vac / 50% load	11.40~12.60V	12.07V
115Vac / 100% load	11.40~12.60V	11.69V
230Vac / 0% load	11.40~12.60V	12.43V
230Vac / 50% load	11.40~12.60V	12.07V
230Vac / 100% load	11.40~12.60V	11.69V

(IV).RIPPLE & NOISE TEST

Test result:

Test condition	Spec.	Reading
115Vac / 100% load	120mV Max	110mV
230Vac / 100% load	120mV Max	90mV

POWSUN CO.,LTD SPECIFICATION FOR APPROVAL

(VI). OVER VOLTAGE PROTECTION

Test result:

Test condition	Spec.	Reading
115Vac / 100% load	Vout*(110%~140%)	118%
230Vac / 100% load	Vout*(110%~140%)	125%

(VII). RISE TIME

Test result:

Test condition	Spec.	Reading
115Vac / 100% load	50mS Max	OK
230Vac / 100% load	50mS Max	OK

(VIII). OVER CURRENT PROTECTION

Test result:

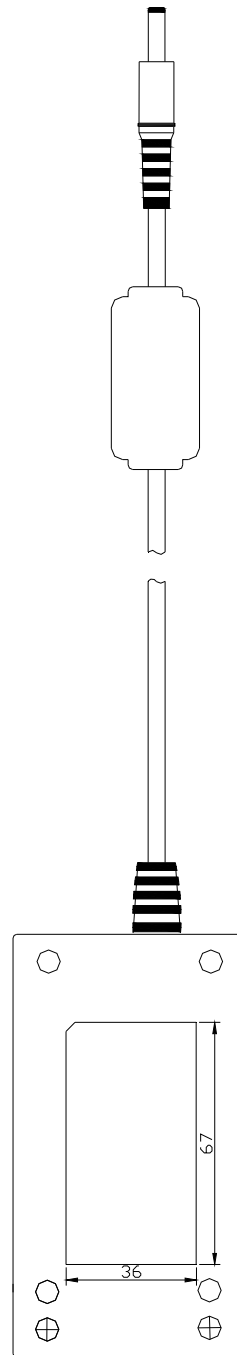
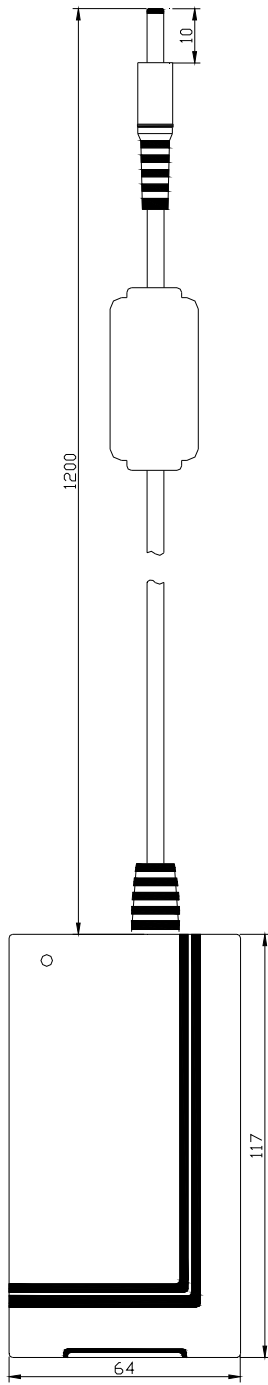
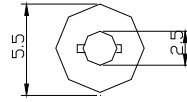
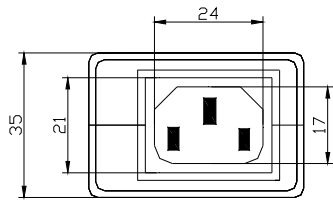
Test condition	Spec.	Reading
115Vac / 100% load	Iout*(110%~140%)	120%
230Vac / 100% load	Iout*(110%~140%)	122%

(IX). SHORT CIRCUIT PROTECTION

Test result:

Test condition	Spec.	Reading
115Vac / 100% load	Under 1W	OK
230Vac / 100% load	Under 1W	OK

POWSUN CO.,LTD SPECIFICATION FOR APPROVAL



±0.1	UNIT	mm
±0.5		
±1.0		
±3.0		
±20.0		